
General

Contents:

- Pg. 1: Quick Reference
- Pg. 2: Mission and Philosophy
- Pg. 3: History
- Pg. 4: Senior Administration
- Pg. 5: College Organization
- Pg. 6: Academic Programs
- Pg. 7: Library Resources and Expenditures



SAINT MARY'S COLLEGE
NOTRE DAME • INDIANA

Office of Institutional Research

Fact Book: Quick Reference

Established:	1844
Congressional District:	2
Accreditation:	Higher Learning Commission of the North Central Association of Colleges and Schools
Carnegie Classification:	Baccalaureate–Arts & Sciences
FICE/OPEID Code:	001836
Student Enrollment:	<i>Fall 2014 headcount</i> → 1,519 <i>Fall 2014 FTE (full-time equivalent)</i> → 1,507
Degrees Awarded:	284 (2013-2014)
Active Alumnae:	21,298
Average Class Size:	16.9 (Fall 2014)
Tuition and Fees:	\$35,970 (Academic Year 2014-2015)
On-Campus Housing:	1,277 (87.2% Living on-campus)
Library Book Volumes:	258,287 (Fiscal Year 2013-2014)
Total Unrestricted Expenditures:	\$50,812,000 (Year ending May 31, 2014)
Market Value of Endowment	\$148,102,212 (as of May 31, 2014)
Employee Headcount:	510 (Fall 2013)
Full-Time Instructional Faculty:	138 (Fall 2013)
Student/Faculty Ratio:	9.5 to 1 (Fall 2013)

Mission and Philosophy

Mission Statement

Saint Mary's College is a Catholic, residential, women's college in the liberal arts tradition. A pioneer in the education of women, the College is an academic community where women develop their talents and prepare to make a difference in the world. Founded by the Sisters of the Holy Cross in 1844, Saint Mary's promotes a life of intellectual vigor, aesthetic appreciation, religious sensibility, and social responsibility. All members of the College remain faithful to this mission and continually assess their response to the complex needs and challenges of the contemporary world.

Statement of Philosophy and Purpose

As a center of higher education, Saint Mary's fosters an academic climate of scholarship and learning for faculty and students alike. Through excellence in teaching and the example of its own active scholarship, the faculty challenges students to expand their horizons and supports them in their intellectual pursuits. A broad-based course of study invites students to think critically and creatively about the natural world and human culture. Acknowledging the need to prepare women for an array of careers, the College insists on a liberal arts foundation for all its students. Through their years at Saint Mary's students acquire depth and breadth of knowledge, competence in quantitative skills and modern languages, the ability to think clearly about complex problems, and the capacity to communicate with precision and style.

As a Catholic college, Saint Mary's cultivates a community of intellectual inquiry, liturgical prayer, and social action. The College creates an open forum in which students freely and critically study the rich heritage of the Catholic tradition, raising the questions necessary to develop a mature religious life. The celebration of liturgy encourages students to explore the fullness of life and its mysteries. The College nurtures awareness and compassion for a troubled world and challenges students to promote human dignity throughout their lives. In preparing women for roles of leadership and action, Saint Mary's pays particular attention to the rights and responsibilities of women in the worlds of work, church, community, and family.

Dedicated to the personal and social growth of its students, Saint Mary's cultivates a community of students, faculty, and staff, which responds to the needs of women. In order to offer the richest educational experience possible, the College strives to bring together women of different nations, cultures, and races. It provides a residential environment where women grow in their appreciation of the strengths and needs of others. Through a host of co-curricular programs on campus and in the local community, Saint Mary's initiates students in the habits of civic responsibility. Engaging in all aspects of the college experience, students acquire the hallmarks of a liberally educated woman: keen self-knowledge, lively imagination, lifelong intellectual and cultural interests, and the ability to make socially responsible choices about the future.

History

In 1843, four Sisters of the Holy Cross came from Le Mans, France, to share in the apostolate of education with the Priests and Brothers of Holy Cross who had been sent by the Bishop of Vincennes to open a college in northern Indiana. One year later, the sisters opened their first school in Bertrand, Michigan, a few miles from Notre Dame. In 1994, Saint Mary's celebrated its sesquicentennial, a time when the College's founders and the College's traditions and many pioneers were honored.

Significant Events

- 1844 Establishment of school at Bertrand, Michigan
- 1848 First commencement
- 1850 Charter granted by State of Michigan
- 1855 Saint Mary's transferred from Bertrand, Michigan to its present campus and was Chartered by the State of Indiana
- 1879 Alumnae Association founded
- 1899 First successful non-commercial wireless message in the United States received at Saint Mary's College from the University of Notre Dame
- 1913 Two Sisters of the Holy Cross, Saint Mary's College teachers, took their Master's degrees from the University of Notre Dame and became the first women graduates from the University
- 1922 Accreditation by North Central Association
- 1925 Accreditation by Indiana State Board of Education for four-year collegiate courses
- 1933 Day students accepted
- 1943 Graduate School of Sacred Theology founded by Sister Madeleva offering a Ph.D. to women (first of its kind in the United States)
- 1946 Saint Mary's became the first women's college in the United States to offer Theology to undergraduates as a regular college major
- 1952 Board of Lay Trustees established; By-laws adopted
- 1959 Full accreditation for preparation of elementary and secondary teachers by National Council for Accreditation of Teacher Education (NCATE)
- 1965 Official beginning of co-exchange program with Notre Dame
- 1972 Nursing program accredited by Indiana State Board of Nurses Registration and Nursing Education
- 1994 Established new governing structure and redefined its relationship with its sponsoring Congregation, the Sisters of the Holy Cross
- 1997 Appointed first lay woman president, Dr. Marilou Eldred
- 2000 College receives \$12 million grant from the Lilly Endowment to support the Center for Women's Intercultural Leadership
- 2004 Dr. Carol Ann Mooney appointed as first lay alumna President of the College
- 2007 "The Path to Leadership 2012" Strategic Plan was finalized
- 2007 President Mooney led a delegation from Saint Mary's to LeMans, France for the beatification ceremonies honoring Father Moreau
- 2008 Spes Unica Hall completed
- 2010 Sophia Program was approved by the College's Board of Trustees
- 2012 Saint Mary's College applied for its first US patent; an inexpensive paper-based tool that can screen for counterfeit pain relievers.

Senior Administration

President

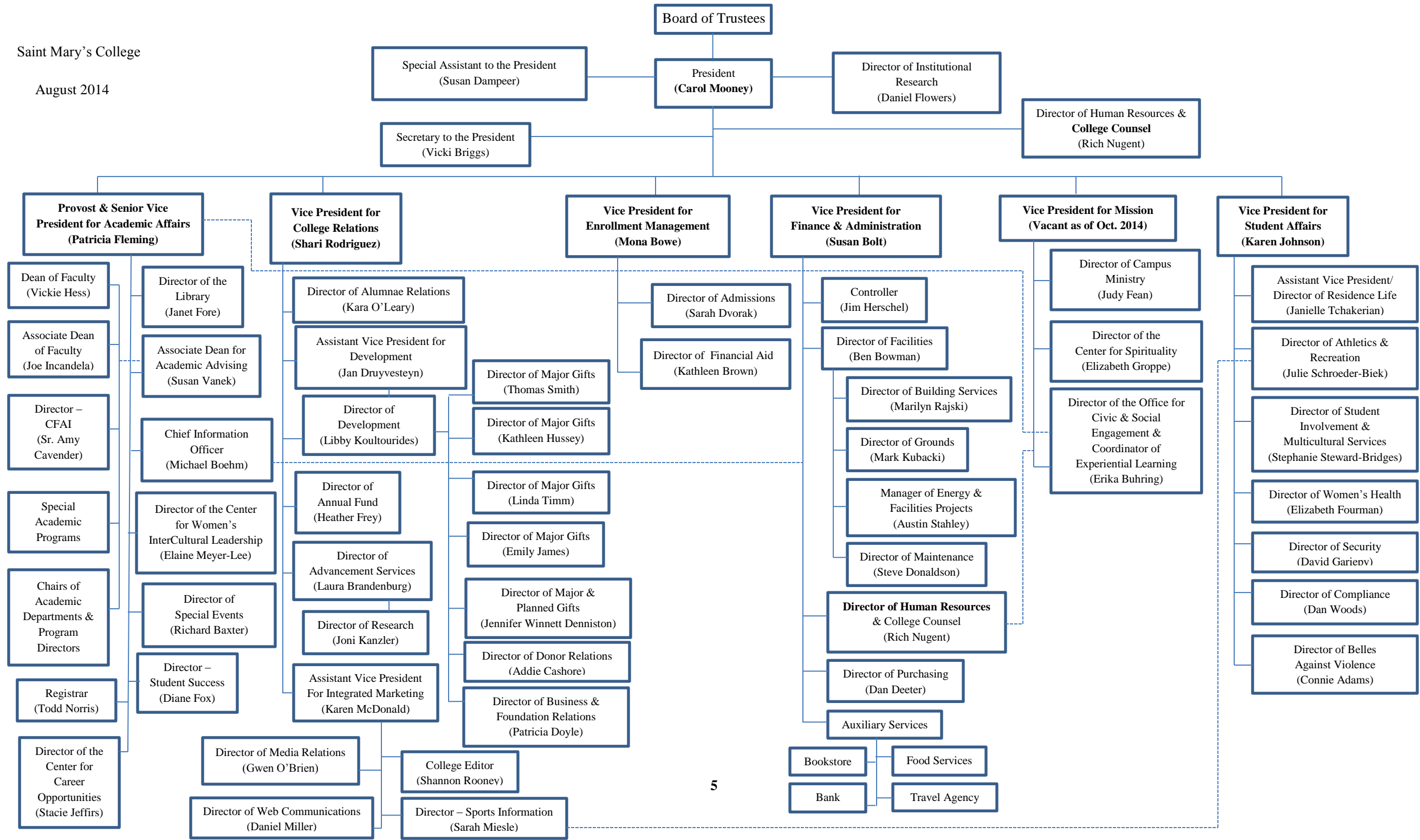
Carol Ann Mooney, J.D.

President's Cabinet

Provost and Senior Vice President for Academic Affairs	Patricia A. Fleming, Ph.D.
Vice President for College Relations	Shari M. Rodriguez
Vice President for Finance and Administration	Susan K. Bolt
Vice President for Mission	Vacant (As of October 2014)
Vice President for Student Affairs	Karen A. Johnson
Vice President for Enrollment Management	Mona Bowe

Previous Presidents

Mother M. Pauline O'Neill, CSC	1895-1931
Sister Irma Burns, CSC	1931-1934
Sister M. Madeleva Wolff, CSC	1934-1961
Sister Maria Renata Daily, CSC	1961-1965
Sister Mary Grace Kos, CSC	1965-1967
Monsignor John J. McGrath, CSC	1968-1970
Sister Alma Peter, CSC (acting)	1970-1972
Dr. Edward L. Henry	1972-1974
Dr. William A. Hickey (acting)	1974-1975
Dr. John M. Duggan	1975-1985
Dr. William A. Hickey (acting)	1985-1986
Dr. William A. Hickey	1986-1997
Dr. Marilou Eldred	1997-2004



Academic Programs

Bachelor of Arts (B.A.)

Art	English Literature & Writing	Political Science
Biology	French	Psychology
Chemistry	Gender and Women’s Studies	Religious Studies
Communication Studies	Global Studies	Social Work
Computing & Applied Mathematics	History	Sociology
Communicative Sciences & Disorders	Humanistic Studies	Spanish
Economics	Italian	Statistics & Actuarial Mathematics
Elementary Education	Mathematics	Student Designed Major
English Literature	Music	Theatre
English Writing	Philosophy	

Bachelor of Science (B.S.)

Biology	Mathematics	Statistics & Actuarial Mathematics
Chemistry	Nursing	Student-Designed Major
Computing & Applied Mathematics		

Bachelor of Business Administration (B.B.A.)

Accounting	Business Administration	Management Information Systems
------------	-------------------------	--------------------------------

Bachelor of Music (B.M.)

Music Education

Bachelor of Fine Arts (B.F.A.)

Art

Program Summary:

- 5 undergraduate degrees offered
- 34 academic majors and 32 major-concentration combinations
- 41 degree-major combinations
- 43 undergraduate minors

Minors

American History	Film Studies	Psychology
Anthropology	French	Public Communication
Art History	Gender and Women’s Studies	Public Relations/Advertising
Biology	Gerontology	Reading
Business Administration	Global Studies	Religious Studies
Chemistry	History	Secondary Education
Computer Science	Humanistic Studies	Social Work
Dance	Intercultural Studies	Sociology
Early Childhood Education	Italian	Spanish
Economics	Justice Studies	Studio Art
English as a Second Language/bilingual/bicultural ed.	Mathematics	Theatre
English Literature	Math/Computer Science	Third World History
English Writing	Music	Women’s History
Environmental Studies	Philosophy	
European History	Political Science	

Library Resources and Expenditures

	2010-2011	2011-2012	2012-2013	2013-2014
Collection				
Number of Volumes	243,986	244,566	244,651	258,287
Serial Subscriptions	15,550	26,259	30,704	60,049
Microforms	18,460	18,612	18,729	18,784
Audio Visual: (Motion Picture, Recordings, Filmstrips, Slides, Videotapes)	3,142	3,333	3,539	3,591
Staff (FTE)				
Chief and other Librarians	7	7	6.5	7
Clerks and Technicians	4.5	4.5	4.5	4.5
Total	11.5	11.5	11.0	11.5
Operating Expenditures				
Salaries and Wages	\$643,482	\$703,826	\$574,785	\$577,041
Benefits	\$160,870	\$189,107	\$165,970	\$166,584
Collection:				
Books	\$29,815	\$33,339	\$49,495	\$43,811
Serials/Periodicals	\$151,138	\$71,393	\$136,065	\$61,527
--Electronic Periodicals	--	\$97,822	\$15,198	\$86,106
Electronic Resources	\$86,063	\$43,706	\$55,447	\$74,494
Audio/Visual	\$909	\$1,894	\$2,898	\$9,957
Preservation	\$2,533	\$3,788	\$1,110	\$405
Other (Microforms, computer related, interlibrary loans)	\$3,531	\$6,323	\$4,443	\$3,452
Total	\$273,989	\$258,265	\$264,656	\$279,752
Other (Equipment, furnishings, computer service, travel, postage, etc.)	\$57,646	\$62,873	\$60,635	\$58,521
Grand Total	\$1,135,987	\$1,214,071	\$1,066,046	\$1,081,898
Circulation				
General	11,714	10,364	11,572	7,349
Reserve	863	909	892	963
Interlibrary Loans				
Provided to others	1,155	1,108	1,421	1,255
Received from others	2,625	2,953	2,439	1,498

One-Year Percentage Change in Library Collection and Circulation

	2010-2011	2011-2012	2012-2013	2013-2014
Collection				
Number of Volumes	-10.8%	0.2%	0.0%	5.6%
Serial Subscriptions	-3.1%	68.9%	16.9%	95.6%
Microforms	1.0%	0.8%	0.6%	0.3%
Audio Visual: (Motion Picture, Recordings, Filmstrips, Slides, Videotapes)	54.9%	6.1%	6.2%	1.5%
Circulation				
General	-10.5%	-11.5%	28.2%	-36.5%
Reserve	0.7%	5.3%	-17.4%	8.0%

Source: Indiana private college libraries data exchange